

# Online Psychometric Testing

Honeycomb provide Psychometric Testing services to a range of Public Sector bodies and private sector industries.

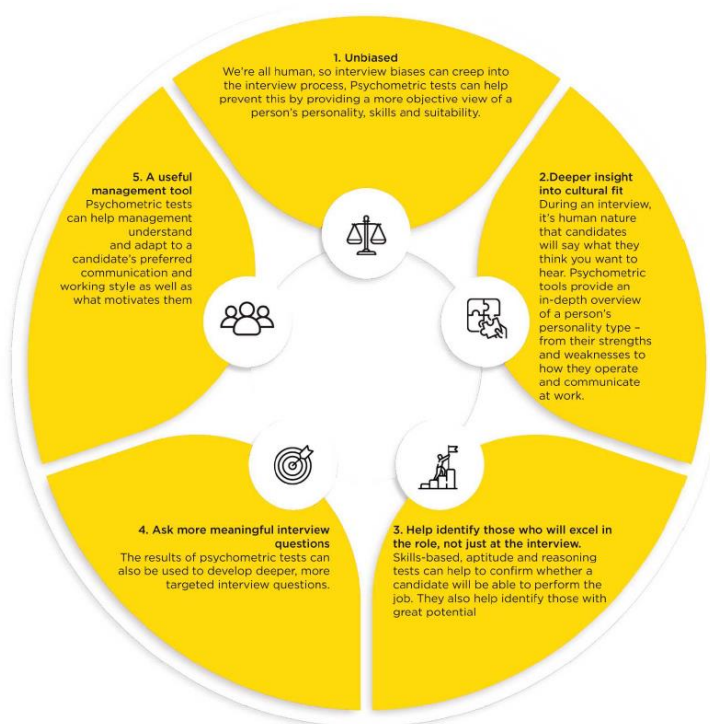
## What is Psychometric Testing?

Psychometric testing is often used in recruitment to help companies work out which applicants are most likely to be successful in a particular job. Testing aims to assess how specific abilities of a candidate will relate to the requirements of a role.

There are many different types of psychometric tests but broadly speaking, they fall into two categories:

- a. Tests of ability (what a person can do)
- b. Tests of personality (What a person is like)

## Why use Psychometric Testing as part of your hiring process?



- SHL Occupational Personality Questionnaire (OPQ32)
- DiSC Personality Profiling
- Talent Q
- Saville Consulting Wave Personality Instruments
- 16 PF
- Hogan Personality Inventory (HPI), Development Survey (HDS) and Motives Values Preferences Inventory (MVPI)
- Myers Briggs
- Mindmill
- Talent Strengths
- Skills Arena

**Make the Right Selection Decision first time.**

[www.honeycomb.jobs](http://www.honeycomb.jobs) 028 9620 7050 [hive@honeycomb.jobs](mailto:hive@honeycomb.jobs)

